

Where do the Joint Supplements You're Selling End Up?

Important Joint Supplement Facts

The Bad News:

- Because of its large molecular size, the Chondroitin Sulfate found in most joint supplements is difficult for the body to absorb. More than 70% usually ends up in the manure!
- Recent studies have shown that very little Glucosamine HCl – another ingredient commonly found in joint supplements – gets into the joint tissue.

The Good News:

- Unlike the ingredients mentioned above, up to 98% of Glucosamine Sulphate 2KCl is available to the joints within only 30 minutes!
- Gluquestrian™ uses human-grade Glucosamine Sulphate 2KCl and Cardinal MSM.
- Not convinced? Gluquestrian™ comes with a **Sell-Through Guarantee** for you and a **Results Based Guarantee** for your customers. What do you have to lose? **NOTHING!**

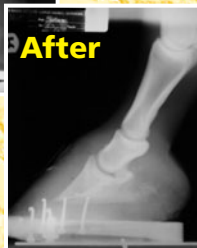


GUARANTEED SALES!

**FREE SHIPPING!
NO MINIMUMS!**

**Up to 40%
Savings on
Selected Items**

Offers Expire 07/31/07



Gluquestrian™ Saved this Horse's Life

"... I was told by my farrier and vet that I needed to put my horse down.... [He] had foundered so badly that his coffin bone had rotated to 16°. ... I tried [Gluquestrian].... It really worked! ... My horse is sound! I am riding him again! Gluquestrian is amazing, and I highly recommend it." - Tammy Nute

Call or visit us online for details

For first-time inquiries about our products, call

For individual consultation or to order by phone, call

1-800-511-4613 or 1-800-628-0997

For more information on this product, visit

www.vetsupplements.com/tsi